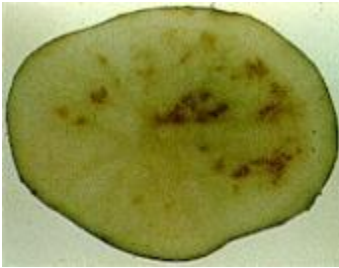


INTERNAL HEAT NECROSIS



No symptoms occur in vines. Affected tubers usually do not show external symptoms. Necrosis may be severe towards the centers of large tubers, appearing as light tan, dark-yellowish to reddish brown, or rust coloured flecks that become, in extreme cases, dark brown or even black. Necrotic flecks are usually clustered off-center in the pith towards the apical end. Necrotic flecks are firm, do not break down or predispose to rot, and remain firm after cooking.

Losses can be severe because of buyer discrimination against internal discolouration.

Optimal conditions for disorder

Internal necrosis becomes more severe during the growing season and is most severe during hot, dry conditions. Light soils of sand, gravel, muck or peat contribute to the occurrence of the disorder. Tubers close to the soil surface are more susceptible to the internal necrosis. Discolouration does not continue during storage.