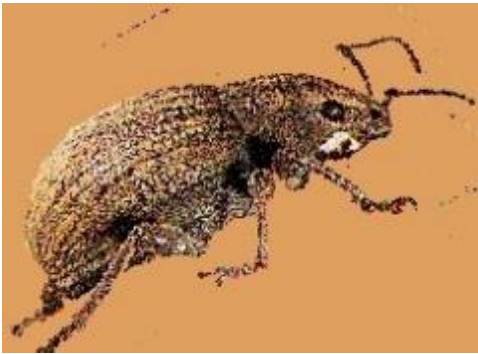


## POTATO SNOOT BEETLE (*Sciobius horni*)

This beetle, is indigenous to southern Africa and has only been noted as a pest since 1973. It is mostly found in the Eastern-Free State, but has also been found in the Piet Retief area.



The adult snout beetle is a short-snouted beetle, about 8 mm long and 4 mm wide, dull black with yellowish scales and unable to fly. The adults also feed on the foliage but do little harm.



The larvae are legless, arc-shaped grubs, white with orange heads. The creamy white pupae are in cells in the soil.



The grubs eat holes 2 - 4 mm wide and 5 mm deep in potato tubers, leaving some loose skin over the edges. The hollows are usually filled with soil.

